



BE  
Inspired

2021

ANNUAL REPORT

DOGWOOD HEALTH TRUST



**JANICE BRUMIT**



**SUSAN MIMS**

# BE Inspired

## A Message from the Chair & CEO

There is no denying that 2021 was a year of significant challenges for Western North Carolina. It may seem that “Be Inspired” would be an unusual message in light of these difficult times. But YOU inspire us, and inspiration is exactly what Dogwood’s board and staff feel as we work with our community partners to dramatically improve the health and wellbeing of everyone in the region.

We are inspired by the caring that you show throughout every aspect of your work. We see it in community health workers who connect families to life-enhancing services, in educators who go the extra mile to keep students engaged in learning and in each of you who lend a hand – or a hammer – to ensure that your neighbors have safe and stable homes. We are inspired by those of you who persevere to keep your workers employed and continue to serve the community, even in the toughest of circumstances.

We are inspired as we witness our partners across the region coming together, time and again, to learn from one another and develop collaborative solutions and innovative approaches for equitably improving lives and increasing opportunities for Western North Carolinians.

Most of all, we are inspired by the resiliency we see throughout the region, even as the COVID-19 pandemic stretches on. That same resiliency will provide the foundation for our region’s ability to move beyond simply responding to current needs. Our resiliency will power our work to embrace a shared vision and proactively create a healthier future where everyone has stable housing, an engaging education, economic opportunity and good health.

Dogwood’s community investment strategy, which was released in the fall of 2021, reflects this spirit of shared vision and collaboration. We are inspired and honored to work with all of our partners to truly transform our region. Together, despite any challenge, we will create a Western North Carolina where every generation can live, learn, earn and thrive – no exceptions.

**JANICE BRUMIT**  
**BOARD CHAIR**

**SUSAN MIMS, MD, MPH**  
**CHIEF EXECUTIVE OFFICER**



“Dogwood brings resources from different areas to leverage the community component.”

HEATHER BOYD, EXECUTIVE DIRECTOR  
- SMOKY MOUNTAIN HOUSING PARTNERSHIPS

“Dogwood listened deeply to us. We are helping communities come back from economic hardship by building employee-owned companies.”

MOLLY HEMSTREET, CO-EXECUTIVE DIRECTOR  
- THE INDUSTRIAL COMMONS



“Dogwood has a commitment to invest in disrupting and dismantling racial injustice in WNC.”

DR. TIECE RUFFIN, PROFESSOR  
- UNC ASHEVILLE

“The staff at Dogwood Health Trust were interested in helping us achieve meaningful impact across the region.”

JACKIE KIGER, COO - PISGAH LEGAL SERVICES



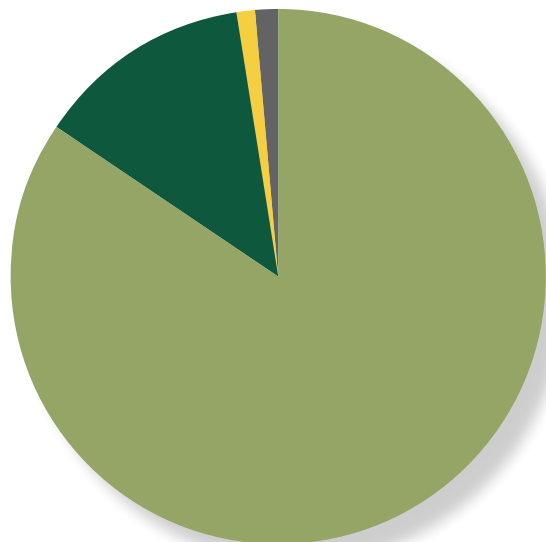
“Having a foundation that is driven to support substance use disorder work has been lifesaving to individuals and has allowed organizations like ours to pursue expansion to communities that have not previously had services for people who use drugs.”

PEGGY WEIL, INTERIM COO - WNCAP



# At-a-Glance<sup>2021</sup>

## TOTAL INVESTED IN COMMUNITY



In 2021, Dogwood invested a total of

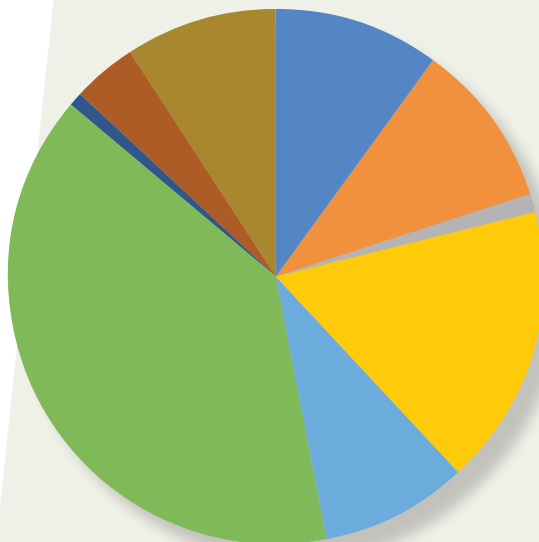
## \$92.1 million

in Western North Carolina.

- Grants - \$78,579,388
- Impact Investments - \$12.1 million
- Leverage Fund/Capacity Building - \$1.2 million
- Program-related Expenses - \$1.2 million\*\*

\*\*Includes Independent Monitor fees and Legacy Foundation support.

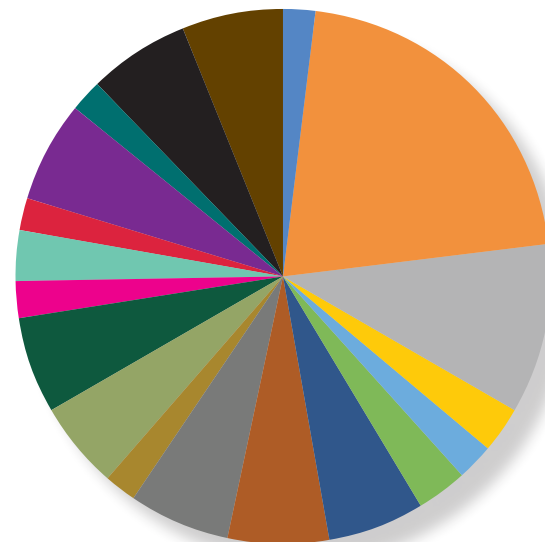
## GRANTMAKING BY FOCUS AREA



- Economic Opportunity - 10% - \$7,665,893
- Education - 10% - \$7,763,684
- Flexible Opportunities - 1% - \$1,148,814
- Health & Wellness - 17% - \$12,943,865
- Healthy Opportunities - 9% - \$7,011,629
- Housing - 39% - \$30,609,940
- Leverage Fund/Capacity Support - .7% - \$588,843
- Racial Equity - 4% - \$3,455,886\*
- Substance Use Disorder - 9% - \$7,435,868
- Broadband - .1% - \$75,000

\*Designated funding in addition to equity focus in all funding areas

## GRANT DISTRIBUTION BY COUNTY



In 2021, Dogwood made

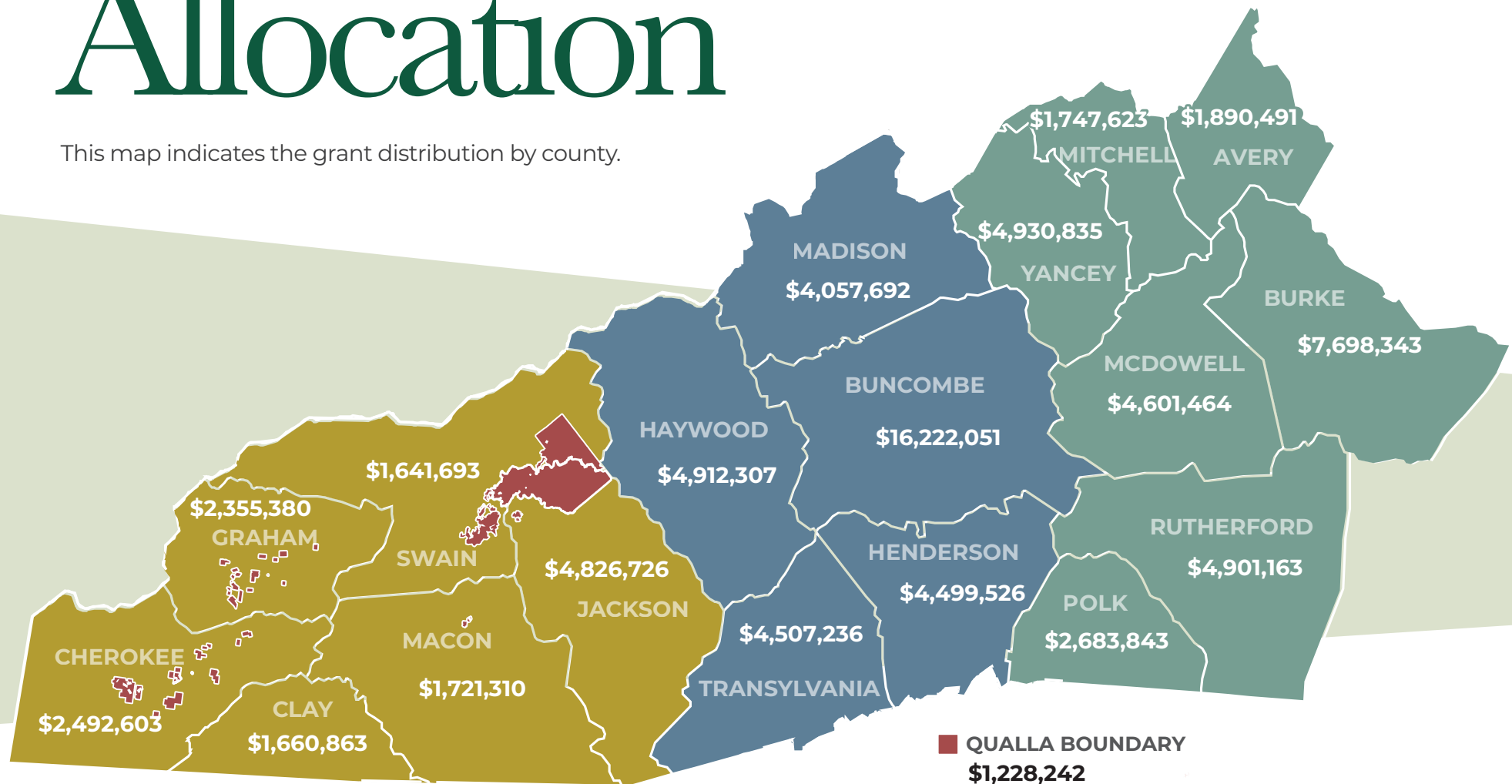
## \$78.6 million

in grants.

- Avery - 2%
- Buncombe - 21%
- Burke - 10%
- Cherokee - 3%
- Clay - 2%
- Graham - 3%
- Haywood - 6%
- Henderson - 6%
- Jackson - 6%
- Macon - 2%
- Madison - 5%
- McDowell - 5%
- Mitchell - 2%
- Polk - 4%
- Qualla Boundary - 2%
- Rutherford - 6%
- Swain - 2%
- Transylvania - 6%
- Yancey - 6%

# REGIONAL Allocation

This map indicates the grant distribution by county.



# TEAM Growth

NEW HIRES FOR 2021



**STEPHEN  
BLOUNT**

*Impact Assistant*



**SPENCER  
BOCK**

*Fellow*



**DOMINICA  
BOCKES**

*Executive Assistant*



**JESSIKA  
BOND**

*Impact Associate -  
Resourcing Impact*



**REBECCA  
BROTHERS**

*Impact Officer -  
Equity*



**JENNIFER  
BRYAN**

*Impact Assistant*



**DONNA  
COTTRELL,  
MBA**

*Financial Analyst*



**SARAH  
GRYMES**

*Vice President of  
Impact - Housing*



**MORIAH  
DEAN**

*Impact Associate -  
Economic  
Opportunity*



**KAITLYNN  
LOVELACE**

*Impact Associate -  
Housing*



**ANDREW  
MAYRONNE**

*Impact Officer -  
Housing*



**KATE OGDEN**

*Human Resources  
Manager*



**HEATHER  
PARLIER**

*Director of Human  
Resources*



**MICHAEL  
PESANT**

*Impact Officer -  
Behavioral Health  
& SUD*



**KARL PIERRE-  
LOUIS**

*Recruiter*



**CHRISTINA  
QUETEL**

*Payroll & Benefits  
Specialist*



**REBECCA  
TELBERG**

*Impact Assistant*



**SARAH  
THOMPSON**

*VP of Impact -  
Economic Opportunity*



**CHANNAH  
VANREGENMORTER**

*Impact Officer -  
Health & Wellness*



**EREKA R.  
WILLIAMS,  
PH.D.**

*VP of Impact -  
Education*



**TRICIA  
WILSON**

*Impact Associate -  
Education*



# 2021 Grantmaking

In 2021, Dogwood made \$78.6 million in grants to organizations serving Western North Carolina.

While the numbers are impressive, it's the experience that makes for effective partnerships with community organizations. During 2021, Dogwood began to hone its grantmaking processes to provide a smoother experience for our community partners. In April we launched a new online application portal to open the door to new conversations about ideas and projects in WNC. Many of these inquiries turned into funded grants. View the full list beginning on page 22.

## Our Strategic Priorities



Housing



Education



Economic  
Opportunity



Health &  
Wellness

BE  
Inspired





## APPLICATION PORTAL Highlights

DURING 2021, DOGWOOD HELD



493

CONVERSATIONS WITH  
POTENTIAL PARTNERS,



354

GRANT APPLICATIONS



127m

FOR A TOTAL OF



AND APPROVED

287

REQUESTS

FOR A TOTAL OF

\$102,445,905

*This figure includes approved multi-year grants that will be paid in 2022 and beyond.*



# Housing

Everyone deserves a safe and stable place to call home. Our work in housing addresses a full continuum, from providing shelter and support for those who are without any housing, to helping maintain and revitalize existing housing, to creating affordable rental and ownership opportunities that fulfill dreams. In 2021, Dogwood invested more than \$30 million in projects that will help secure 1,135 units of new housing in Western North Carolina and repair and preserve existing homes. We also supported the creation of two new housing consortiums in our region that will attract more than \$1 million annually in affordable housing funds.



## Graham County Rural Development Association

Dogwood and Graham County Rural Development Association (GCRDA) have partnered to develop affordable housing, enabling access to homeownership for 13 low to moderate-income families in Robbinsville, NC. In October 2021, GCRDA broke ground on the development of 13 lots in preparation for residential construction, providing a path to first-time homeownership for families that could not otherwise afford to purchase safe housing.



## PODER Emma

PODER Emma stewards, protects and develops permanently affordable housing in the Erwin District of Buncombe County through the creation and support of resident-owned mobile home park cooperatives. Mobile homes are a primary form of existing, affordable housing; however, the traditional model of mobile home parks where residents rent the land creates housing instability and leaves low-income families extremely vulnerable to displacement. The cooperative model creates stable, dignified housing and roots intergenerational wealth. PODER Emma provides extensive technical assistance, training and cooperative development services, as well as home repair services to protect existing affordable housing units so that residents can live in health, safety and dignity.



# Education

Education begins before birth and lasts a lifetime. Vibrant educational experiences should do the same. From early brain development to career training, we look for ways to make education more engaging and meaningful for learners of all types. Dogwood invested \$7.7 million in education in 2021 to help early learning centers, K-12 schools, supplemental programs and institutions of higher education reach more WNC students with learning opportunities that resonate.



## Western Region Education Service Alliance

Even before the pandemic, area school systems were experiencing the need for additional mental health and social and emotional learning support. One of the largest areas of need centers around the Multi-Tiered System of Support (MTSS), a framework that focuses on meeting students at their levels. MTSS focuses on social-emotional learning, and educator professional development. WRESA and Dogwood realized this need and partnered to create an avenue for educators to receive the training they require to serve the students of WNC. As a result, 12 WNC school districts trained 200 educators.



## STEM West, Inc.

To increase reading scores, students need to have an interest in reading. LEGO® Education SPIKE™ Essential sets provide relevance and interest in literacy. With funding from Dogwood, STEM West created the infrastructure for collaborative learning and a curriculum to align reading texts and literacy skills through engineering and coding with LEGO® sets.



# Economic Opportunity

When individuals own a successful business or hold a fulfilling job, those individuals, their families and their entire communities are more likely to be healthy and happy. We envision a region with a thriving economic ecosystem that supports sustainable wages, diverse entrepreneurial enterprises and a workforce that is well prepared and ready for prosperity. In 2021, we invested more than \$7.6 million to make WNC's economy more robust, innovative and sustainable.



## McDowell Technical Community College Construction Trade Skills Academy

McDowell Community Technical College, in partnership with Dogwood, has developed an innovative curriculum to provide practical skills training in general construction, construction project management and a specialized elective in modular housing installation. Students can participate in paid internships before and after high school graduation at construction sites and in the home repair program, both of which are administered by Gateway Wellness Foundation. This program will produce a ready stream of skilled construction workers and project managers for a sector that has a shortage of employees.



## Southwestern Commission, WNC Food Works

WNC is a busy ecosystem of farms, food producers, restaurants, and other food-related businesses. With help from WNC FoodWorks, more budding businesses can become part of the regional food economy. Operated by WNC Blue Ridge Food Ventures, WNC FoodWorks is a 5,000 square-foot training and educational facility for aspiring food entrepreneurs, located at the WNC Farmers Market in Asheville. WNC FoodWorks serves as an entry-level facility for new and aspiring entrepreneurs such as food truck operators, farm-based businesses, value-added products and others requiring support to launch new food business enterprises. The venture anticipates 36 new enterprises and 50 new jobs within the first three years after opening. They also expect that more than 200 individuals will receive technical guidance on proper food manufacturing and marketing.





# Health & Wellness

Holistic health stretches far beyond clinical services. Our health and wellness work focuses on strengthening the intertwining threads of mental health, resiliency and access to care for everyone, as well as closing disparities in health outcomes. In 2021, we provided nearly \$13 million in grants to health and wellness partners, which included a focus on pandemic response and recovery, as well as an additional \$7.4 million specifically to support substance use prevention and treatment.



## Mountain Community Health Partnership

A partnership between Dogwood and Mountain Community Health Partnership (MCHP) brings dental services to low-income uninsured adults and children at the Bakersville Community Medical Clinic. State and national dental health reports indicated that over 50% of adults in MCHP's service area have had a permanent tooth removed because of tooth decay or gum disease, approximately 25% of children have not had an oral health exam in over a year and 18% of children have experienced oral health problems. MCHP continues to keep dental health accessible as more residents experience the loss of jobs and health insurance in the wake of COVID-19.



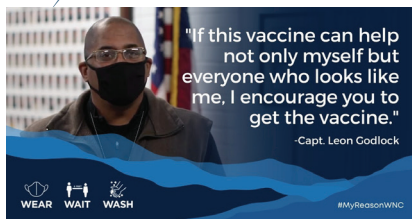
## Impact Health

May of 2021 brought great news that Western North Carolina had been selected by NC Department of Health and Human Services to participate in the Healthy Opportunities Pilot (HOP) program, which will cover the cost of nonprofit services for food security, transportation, housing and interpersonal violence for qualified Medicaid members. Although Dogwood created the HOP proposal for the region, delivering the proper oversight and management required a new and dedicated entity - Impact Health. During the second half of 2021, Impact Health grew to a staff of four and engaged more than 50 nonprofits in the application process to join its Human Services Organization (HSO) network.



# COVID-19

While COVID-19 was ever present in 2021, the arrival of vaccines allowed Dogwood to shift its pandemic-related work from response to prevention. Under the umbrella of our Health & Wellness strategic priority area, we supported a number of outreach, education and collaboration efforts focused on growing the number of vaccinated WNC residents. We also saw our impact investment in CommunityLabWNC deliver social returns as this local lab became a regional hub for COVID-19 testing.



## WNC Health Network

Serving the region for more than 25 years, WNC Health Network (WNCHN) exists to support community health across Western North Carolina. In September 2020, WNCHN began a collaborative regional COVID-19 communications campaign, supporting and coordinating efforts of local public health agencies throughout Western North Carolina to effectively share crucial information and messages related to COVID-19 with local residents. Because community leaders and advocates are often some of the most trusted voices in their communities, the campaign features images and video testimonials of local community members sharing their motivations for practicing COVID-safe behaviors and why they received the COVID-19 vaccine. To date, the campaign has had over 1 million views, and more than half of those seeing the campaign sought more information, changed their prevention behaviors or considered or got the vaccine.

BE  
Inspired



Change Agent  
Phillip Cooper

# Substance Use Disorder

## Rutherford County United Way/Voices of Affrilachia

Dogwood partnered with Change Agent Phillip Cooper and the Rutherford County United Way to create an event called “Voices of Affrilachia,” featuring listening sessions and site visits between NC DHHS officials and Black and Indigenous people of color community leaders in WNC to create culturally sensitive mental health and SUD services in WNC. As a direct result of the “Voices of Affrilachia” project, United Way of Rutherford County and Cooper partnered on a larger, short-term project funded by NCDHHS in collaboration with Partners Behavioral Health. The program, named “Project Urgent Need,” served people with severe mental illness or co-occurring disorders. Cooper led a team of peer support specialists, providing housing assistance and follow-up peer support to 170 people in WNC and Catawba and Cleveland counties. Other team members distributed Narcan across a seven-county footprint. From their efforts, project leaders have been notified of six lives saved from overdoses.



# Racial Equity

In 2020, Dogwood pledged to focus a dedicated pool of funds toward increasing equitable opportunities and outcomes for people of color and also reaffirmed the commitment to diversity, equity and inclusion that has been core to our work since inception. In 2021, our racial equity portfolio included more than \$3.4 million in grants to organizations led by and/or primarily serving people of color, and grants throughout all strategic priority areas were made with an eye toward equity.



## Warrior Moms

An innovative, grassroots program, Warrior Moms works to eradicate emotional paralysis among single mothers who live in poverty. Warrior Moms has studied, researched and implemented proven and tested intellectual property products and tools that create remedies for emotional paralysis. With support from Dogwood, Warrior Moms is developing a one-stop healing program named “Warrior Moms Ink” that gives participants the tools and support to develop their own intellectual property by creating music, writing poetry, publishing a book or developing a wellness product that allows them to monetize their experiences and demonstrate healing for others.



## El Centro

Located in Henderson County, El Centro is home to many programs, including the Latino Advocacy Coalition (LAC). For the past 14 years, LAC has provided support for the Hispanic/Latino community throughout WNC, including English and Spanish classes, after-school tutoring, GED classes, family mutual support programs, civic education, free and low-cost counseling, cognitive, trauma and grief therapy, and cooperative programs with state and local officials. This small-but-mighty organization was ready to take the next step toward stability and growth, and Dogwood’s capacity-building support will help LAC’s staff of three add a new administrative and fundraising professional. This new team member is creating a broad fundraising campaign for LAC and supporting the growth of new programs and partnerships.





# Leverage Fund

No single foundation can fuel all of the innovative ideas and organizations that are working to address needs in WNC. That's why Dogwood's Leverage Fund connects area organizations with proven professional grant writers who help pursue and attract significant funding from public and private sources outside of our region.

IN 2021, WE SUPPORTED  
**\$709,366**  
IN GRANT WRITING AND  
CONSULTING SERVICES

THAT HAVE SECURED MORE THAN  
**\$8.7 million**  
IN ADDITIONAL INVESTMENT IN OUR  
NONPROFIT AND GOVERNMENT PARTNERS.

WE ALSO PROVIDED MORE THAN  
**\$588,000** IN CAPACITY-BUILDING GRANTS  
AND MATCHING FUNDS TO  
COMMUNITY PARTNERS.



## AMCHC

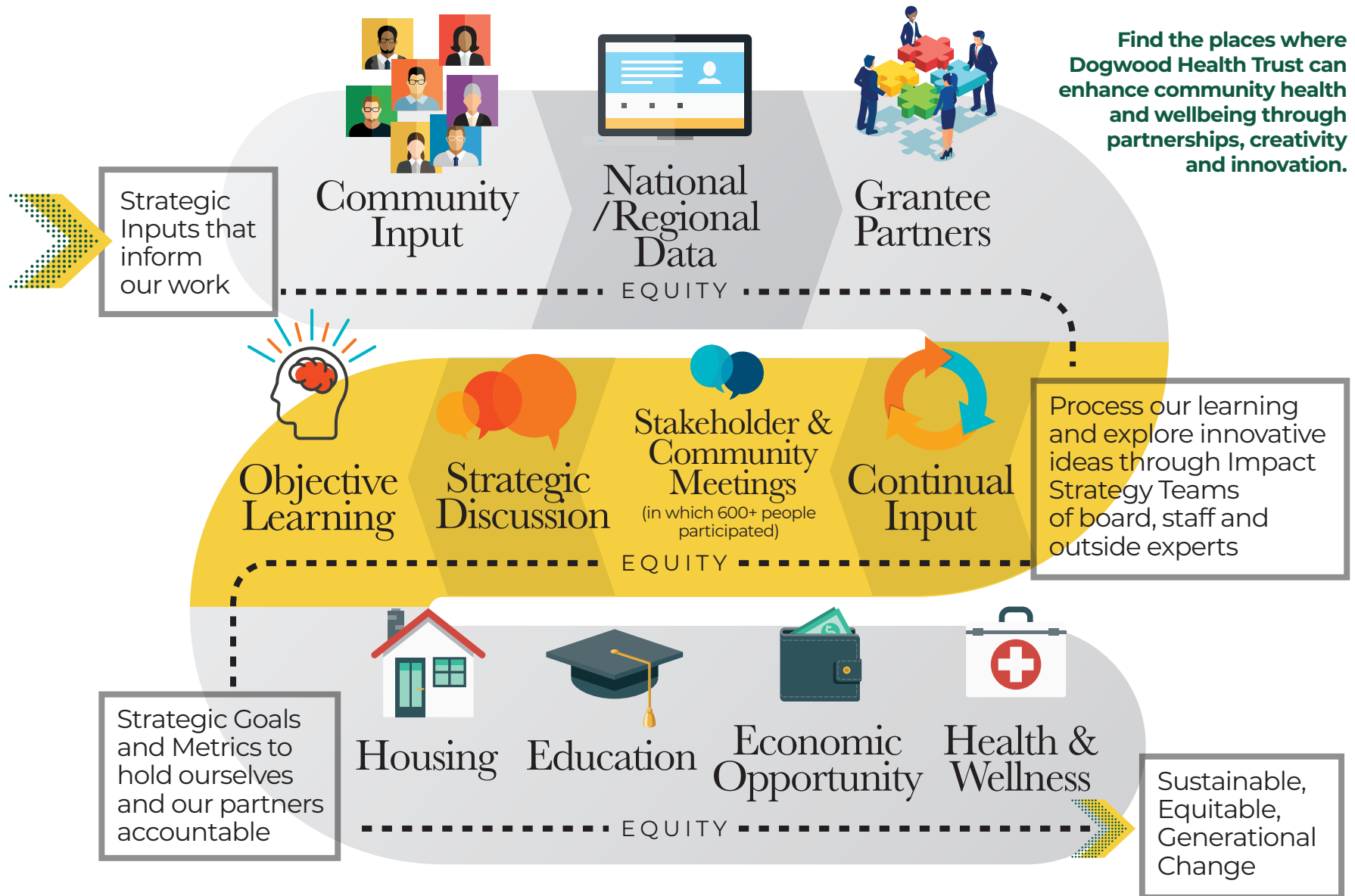
With \$18,000 in support from the Leverage Fund, Appalachian Mountain Community Health Centers (AMCHC) worked with a grant writing consultant to secure \$150,000 from the federal Rural Communities Opioid Response Grant Program. With these funds, AMCHC will work as part of a regional partnership with rural federally qualified health centers, local health departments, Mountain Area Health Education Center (MAHEC), Vaya Health, Mountain Wise and the UNC Gillings School of Public Health to serve Cherokee, Clay and Graham Counties. These counties have been hardest hit by opioid use and a shortage of providers and services to address prevention, treatment and recovery. AMCHC and its partners will be implementing a strategic plan, workforce development plan and a sustainability plan that they developed together to serve this tri-county region.



# Launching A NEW STRATEGY

In October 2021, Dogwood's board unanimously approved a new, multi-year grantmaking strategy with clear goals and objectives to guide our work forward in equitable and effective ways in the coming years. This strategy was the result of months of research, consultation and discussion with national experts, community partners and internal board and staff Impact Strategy Teams.

# Our Strategic Planning Process



# Strategic Goals for 2022



## Housing

### **Goal 1: Support Healthy and Safe Revitalization Opportunities**

Support healthy and safe revitalizations that work against displacement and gentrification and create generational wealth

### **Goal 2: Create and Preserve Supportive Housing Rental Units**

Invest in housing with sustainable supports for physical and mental health and wellbeing

### **Goal 3: Create and Preserve Senior Housing**

Support age-appropriate resources in affordable and workforce units, rental and owned

### **Goal 4: Create and Preserve Housing Units for Persons Below 50% of the Median Income**

Increase affordable housing for lowest-income individuals and families

### **Goal 5: Use Impact Investments to Create Affordable and Workforce Housing**

Provide loans, guarantees and other financial tools to leverage funding opportunities



## Education

### **Goal 1: Develop a Comprehensive Landscape Study**

Source, analyze and share comprehensive, regularly updated data that provides a county-by-county picture of access, workforce and student outcomes in early childhood education and K-12 education specific to Western North Carolina

### **Goal 2: Improve Early Care and Education Ecosystem**

Invest in an improved early childcare and education ecosystem with the resources and sustainability to provide developmentally appropriate, affordable and accessible education and care to support ages birth to five, so that all children in WNC enter kindergarten ready to learn

### **Goal 3: Improve K-12 Education**

Support K-12 learning experiences with the resources and sustainability to provide an excellent academic and social-emotional education, so that all students graduate ready for college or career

### **Goal 4: Support Higher Education Career Readiness**

Work in tandem with Economic Opportunity Strategic Priority to invest in career readiness at the community college and university levels





## Economic Opportunity

### Goal 1: Develop a Comprehensive Data Resource

Source, analyze and share comprehensive, regional data that paints a full picture of work readiness, economic development and entrepreneurial needs and opportunities specific to Western North Carolina

### Goal 2: Promote Work Readiness

Help build a skilled workforce with the knowledge and technical abilities to excel in a wide range of industry employment opportunities that provide a competitive, sustainable wage

### Goal 3: Build Economic Ecosystems

Help build a regional economic ecosystem that supports increased creation/retention of jobs and business ownership

### Goal 4: Foster Entrepreneurship

Support a well-funded, sustainable, competitive entrepreneur and small business ecosystem throughout the region



## Health & Wellness

### Goal 1: Support and Build Healthy Communities

Support communities that promote healthy living and resiliency and help mitigate the impact of trauma, isolation and stress on individuals and families, especially those experiencing poverty

### Goal 2: Increase Access to Whole-Person Health Care

Invest in integrated health care with seamless connections to supportive services

### Goal 3: Address Health Disparities

Help reduce disparities based on race, location, education and income factors

### Goal 4: Increase Access to Behavioral Health and Substance Use Prevention and Treatment

Support programs and networks that reduce deaths, treat addiction and prevent first use



Learn more about these goals at [dht.org/strategic-priority](https://dht.org/strategic-priority)

# 2021 Grantee List

\* indicates a multi-year grant

**ABCCM**  
Operating Support  
\$50,000  
Leverage Fund/Capacity Support

Medical Services for the  
Uninsured in Buncombe County  
\$250,000  
Health & Wellness

**AIDS Leadership Foothills-Area Alliance**  
Foothills Area Harm Reduction  
Mission - The Farm Burke  
County  
\$100,000  
Substance Use Disorder

**Alzheimer's Association**  
Project ECHO WNC\*  
\$103,750  
Health & Wellness

**AMY Wellness Foundation**  
Home Repair for AMY Region\*  
\$300,000  
Housing

Facility Remodel  
\$700,000  
Housing

**Appalachian Mountain  
Community Health Centers**  
Expand Post-Overdose  
Response Team  
\$996,420  
Substance Use Disorder

**Appalachian Sustainable  
Agriculture Project**  
Farm Fresh for Health and  
Growing Minds  
\$499,968  
Health & Wellness, Education

**Appalachian Therapeutic Riding  
Center**  
Summer Camp  
\$7,500  
Health & Wellness

**Arc of Buncombe County, Inc.**  
Increasing Options for Homeless  
Families and Children with I/DD  
Diagnostics  
\$20,000  
Health & Wellness

**Asheville Buncombe Institute of  
Parity Achievement**  
WNC Community Health  
Worker Coalition  
\$150,000  
Health & Wellness

**Asheville City Schools  
Foundation**  
Racial Equity Ambassadors  
Program  
\$85,000  
Racial Equity

**Asheville Creative Arts**  
Hood Huggers International  
Youth "Under Instruction"  
Program  
\$150,000  
Racial Equity

**Asheville Habitat for Humanity**  
Affordable Homeownership  
\$170,000  
Housing

**Asheville Writers in the Schools**  
Word on the Street/ Voz de los  
Jovenes  
\$100,000  
Racial Equity

**Asheville-Buncombe  
Community Land Trust**  
Tax Relief Fund  
\$10,000  
Housing

**Aurora Studio & Gallery**  
Building Upfit  
\$4,100  
Health & Wellness

**Avery County**  
Asset Inventory/Assessment and  
Affordable Housing Study  
\$275,000  
Housing

**Babies Need Bottoms**  
Diaper Assistance for Vulnerable  
Families  
\$30,000  
Health & Wellness

**Baptist Children's Home of  
North Carolina Inc.**  
Baptist Children's Home Family  
Foster Home in Clay County  
\$650,000  
Housing

Independent Living Home in  
Clay County  
\$335,000  
Housing

**Blue Ridge Community College  
Education Foundation**  
COVID Vaccine Expense Relief  
\$100,000  
Health & Wellness

Success Coaches for Students at  
Blue Ridge Community College  
\$424,950  
Economic Opportunity

**Blue Ridge Community Health  
Services**  
Mobile Hotspots to Support  
COVID Vaccinations in Rural  
WNC  
\$16,800  
Health & Wellness

Expanding Behavioral Health  
Services  
\$80,000  
Health & Wellness

MAT Services for 7th Ave.  
Clinic and Behavioral Health  
Medication\*  
\$329,500  
Substance Use Disorder

**School-Based Health Centers\***  
\$89,603  
Health & Wellness, Education

**Blue Ridge Free Dental Clinic**  
Increasing Access to Dental Care  
in WNC  
\$100,000  
Health & Wellness

**Boundless Impact**  
ImagineHub: Learning  
Network of Innovation and  
Entrepreneurship Centers  
\$100,000  
Economic Opportunity

**Bountiful Cities Project**  
Urban Agriculture Collaborative  
Programs and Apprenticeship  
\$90,000  
Health & Wellness

**Bounty & Soul**  
Operating Support  
\$64,815  
Health & Wellness

**Boys & Girls Club of Henderson  
County**  
RISE\*  
\$100,000  
Economic Opportunity

**Buncombe County**  
Community Paramedicine/  
Mobile Integrated Healthcare  
Program  
\$117,953  
Substance Use Disorder

**Integrated Public Health-Justice  
Initiative**  
\$219,941.54  
Substance Use Disorder

**Mobile Medication-Assisted  
Treatment**  
\$500,000  
Substance Use Disorder

**Substance Use Disorder/  
Behavioral Health Collaborative  
Planning\***  
\$249,233  
Substance Use Disorder

**Buncombe County Partnership  
for Children**  
Computer Donation (in-kind)  
\$13,538.70  
Flexible Opportunities

**Buncombe County Schools  
Foundation**  
BCS Family Resource Center  
"The Face of Hope"  
\$100,000  
Education

**Burke County United Way**  
Collaborative Projects in  
Housing and Childcare\*  
\$122,613  
Flexible Opportunities

**Camp Grier**  
Catawba Vale Trails Project  
\$489,800  
Economic Opportunity, Racial  
Equity

**CareReach**  
Access to Care Networks for the  
Uninsured  
\$209,152  
Health & Wellness

**WNC Community Health  
Worker Network**  
\$150,239  
Health & Wellness

**Carolina Public Press**  
Reporting on the American  
Rescue Plan Act in Western  
North Carolina  
\$128,033  
Flexible Opportunities

**Center of Domestic Peace**  
Website Upgrade and  
Modernization  
\$8,500  
Leverage Fund/Capacity Support

**Victim Services Expansion:**  
Advocate Support Specialist  
\$24,170  
Health & Wellness

**Cherokee County**  
Cherokee County  
Comprehensive Housing Project  
\$300,000  
Housing

**Children & Family Resource Center of Henderson County**  
Community Health Doula Program  
\$90,000  
Health & Wellness, Racial Equity

**Children First Communities In Schools of Buncombe County**  
Student Support Specialists\*  
\$200,000  
Education

**Church of the Advocate**  
Good Works! Program\*  
\$15,000  
Economic Opportunity, Substance Use Disorder

**City of Asheville**  
Code Purple Homeless Emergency Shelter Assistance  
\$50,000  
Health & Wellness

**City of Hendersonville**  
Hendersonville Connections Center  
\$1,500,000  
Housing

**City of Morganton**  
Morganton Utility Infill Affordable Housing Project  
\$2,161,125  
Housing

**Colaborativa La Milpa**  
PODER EMMA Cooperative Housing Network\*  
\$115,000  
Housing

**Community Action Opportunities**  
Bridging the Digital Divide for Head Start Families  
\$46,300  
Education

**Community Focus Foundation**  
Mary C. Jenkins Community Center & Cultural Center Programs  
\$284,735  
Racial Equity

**Community Foundation of WNC**  
COVID-19 Vaccine Support  
\$100,000  
Health & Wellness

**WNC Flood Relief**  
\$500,000  
Health & Wellness

**Community Housing Coalition of Madison County**  
ESFRLP/URP Capacity Building  
\$50,000  
Housing

**Housing Replacement Pilot Program**  
\$121,733.33  
Housing

**Creating A Family**  
Prenatal Exposure  
\$79,000  
Substance Use Disorder

**E-Polk Inc. dba Pangaea Internet**  
Sunshine Broadband Project  
\$75,000  
Broadband

**Eagle Market Street Development Corporation**  
The Community Equity Fund  
\$260,000  
Economic Opportunity

**Catawba Vale Collective**  
Business Incubation HUB  
\$280,000  
Economic Opportunity, Racial Equity

**Brown Temple CME Church**  
Digital Outreach Program and Community Expansion  
\$137,500  
Substance Use Disorder

**East Carolina University Medical & Health Sciences Foundation, Inc.**  
Improved Access to Oral Health Care  
\$225,000  
Health & Wellness

**Eastern Band of Cherokee Indians**  
Cherokee Indian Housing Support  
\$705,000  
Housing

**Eblen Charites**  
Eblen Charities Assistance Project\*  
\$100,000  
Health & Wellness

**Eleanor Health Foundation**  
Medical Home Access Accelerator  
\$205,000  
Substance Use Disorder

**Eliada Homes**  
Equine Therapy  
\$100,000  
Health & Wellness

**FIND Outdoors**  
The Explorers Club at the Cradle of Forestry\*  
\$50,000  
Health & Wellness

**First At Blue Ridge, Inc.**  
Jail Diversion Project  
\$164,250  
Substance Use Disorder

**First United Methodist Church of Waynesville**  
Middle School Afterschool Program  
\$87,000  
Education

**Flat Rock Playhouse**  
Playhouse Jr.  
\$135,800  
Education

**Foundation for Health Leadership & Innovation**  
WNC Oral Health Patient Advocate Pilot\*  
\$200,480  
Health & Wellness

**Four-Square Community Action**  
Housing Repair Programs\*  
\$200,000  
Housing

**Freedom Life Ministries**  
Substance Misuse Planning and Capacity Development\*  
\$300,000  
Substance Use Disorder

**Friends of PIVOTPoint WNC**  
AWD Vehicle Project  
\$37,638.25  
Substance Use Disorder

**Gateway Wellness Foundation**  
Rutherford Infrastructure and Predevelopment for Home Ownership  
\$155,475  
Housing

**Single Family Home Developer Team\***  
\$145,000  
Housing

**Gap Funding for Home Repair Programs in Burke, McDowell, Polk and Rutherford Counties**  
\$200,000  
Housing

**Home Repair Capacity Building for McDowell and Polk Counties**  
\$50,000  
Housing

**Behavioral Health and SUD Funding**  
\$449,000  
Substance Use Disorder

**Getting Back to the Basics**  
Project Lighten Up Afterschool Programming  
\$39,000  
Education

**Girls On The Run of WNC**  
Return to Learn, Run and Have Fun  
\$75,000  
Health & Wellness

**Graham County**  
Comprehensive Assessment & Collaborative Planning to Improve and Save Lives in Graham  
\$242,817.60  
Substance Use Disorder

**Graham County Rural Development Authority**  
Moose Branch Subdivision Project  
\$470,000  
Housing

**Green Built Alliance**  
Home Repairs and Energy Efficiency Upgrades  
\$125,000  
Housing

**Green Opportunities**  
Trades Academy\*  
\$169,124.25  
Economic Opportunity

**Habitat for Humanity - Avery County**  
Avery Habitat House  
\$170,000  
Housing

**Habitat for Humanity - Macon/ Jackson County NC**  
Housing Needs for Macon and Jackson Counties  
\$170,000  
Housing

**Hands On! A Child's Gallery**  
Hands On! BIPOC People's Museum Project  
\$80,500  
Racial Equity

**Haven of Transylvania County**  
Homeless, Hearing from the Past and Working to the Future  
\$65,000  
Health & Wellness

**Hawthorn Heights WNC, Inc.**  
Hawthorn Heights  
\$180,000  
Substance Use Disorder

**Haywood County**  
COVID-19 Wastewater Project  
\$39,800  
Health & Wellness

**HUD HOME Funds Match**  
\$261,690  
Housing

**Tropical Storm Fred Housing Repairs**  
\$500,000  
Housing

**Haywood Habitat for Humanity, Inc.**  
Affordable Homeownership in Waynesville  
\$170,000  
Housing

**Haywood Street Congregation**  
Homeless Essential  
\$22,600  
Housing

**Haywood Street Respite**  
\$55,000  
Housing

**Helping Hand Developmental Center**  
Quality Preschool Opportunities  
\$100,000  
Education

**Helpmate**  
Case Management Services for Domestic Violence Survivors  
\$200,000  
Health & Wellness

**Henderson County**  
Community Collaborative for Opioid Planning  
\$300,000  
Substance Use Disorder

**Henderson County Habitat for Humanity**  
Affordable Housing Funding Assistance\*  
\$170,000  
Housing

**Henderson County United Way, Inc.**  
Equity, Operating, and Strategic Planning Support  
\$160,000  
Flexible Opportunities

**High Country Community Health**  
WNC Community Health Worker Initiative\*  
\$75,000  
Health & Wellness

**High Country United Way**  
Impact Investment Support in Avery, Mitchell and Yancey Counties  
\$62,064  
Flexible Opportunities

**Highlands-Cashiers Health Foundation**  
Expanding Rural Healthcare  
\$300,000  
Health & Wellness

**Regional Healthy Homes Initiative**  
\$200,000  
Housing

**Hinton Rural Life Center, Inc.**  
Safe and Healthier Homes in Clay and Cherokee Counties  
\$50,000  
Housing

**Rural Leadership Development**  
\$20,000  
Economic Opportunity

**Hola Community Arts**  
WNC Community Health Worker Initiative  
\$150,000  
Health & Wellness

**Homeward Bound WNC**  
Home is Key Initiative  
\$2,000,000  
Housing

**Permanent Supportive Housing**  
\$300,000  
Health & Wellness

**Hot Springs Health Program**  
Capacity Building for Hot Springs Health Program  
\$200,000  
Health & Wellness

**Housing Assistance Corporation**  
Home Repair Program  
\$150,000  
Housing

**Little White Oak**  
\$620,000  
Housing

**Tax Credit and Pre-Development Funds**  
\$160,000  
Housing

**Impact Health**  
Net Transfer of NCDHHS Funds  
\$6,611,628.91  
Healthy Opportunities

**Institute for Prevention Healthcare and Advocacy**  
Health Engagement Leading to Prevention  
\$50,000  
Health & Wellness

**Jackson County**  
Jackson County Homeless and Domestic Abuse Shelters  
\$2,174,497.50  
Housing

**Jackson County Board of Education**  
Preschool Expansion  
\$236,000  
Education

**Jackson County Department of Public Health**  
COVID-19 Wastewater Project  
\$101,000  
Health & Wellness

**Jewish Family Services of WNC**  
Needs to Assessment for an Aging in Place Membership Plan  
\$90,000  
Health & Wellness

**Jordan Peer Recovery**  
Economic Development Job Creation and Apprenticeship for Recovery\*  
\$309,000  
Economic Opportunity

**Land of Sky Regional Council**  
Marketing Campaign for NC BIO Broadband Survey  
\$250  
Economic Opportunity

**WNC Recovery to Career**  
\$89,515  
Substance Use Disorder

**Matching Funds for WNC Early Childhood Education Workforce Development\***  
\$125,000  
Economic Opportunity, Education

**Regional Resiliency Analysis & Plan Concurrence**  
\$95,000  
Economic Opportunity

**Student Connect - Connecting Communities through Hot Spot Lending**  
\$70,635.50  
Education

**Transitioning and Upscaling Creative Sector Manufacturing**  
\$50,000  
Economic Opportunity

**Impact Health - Transportation**  
\$400,000  
Healthy Opportunities

**Lutheran Family Services in the Carolinas**  
Transitional Living Program  
\$200,000  
Health & Wellness

**Macon County Housing Department**  
Expanding ESFR and URP  
\$50,000  
Housing

**Madison County**  
Madison MATters  
\$120,000  
Substance Use Disorder

**Madison County Education Foundation**  
K-5 Playgrounds for Madison County Elementary Schools  
\$450,000  
Education

**Madison County Habitat For Humanity**  
Affordable Single Family Homes  
\$170,000  
Housing

**Marketing Association For Rehabilitation Centers, Inc.**  
PPE Production Start-Up  
\$1,236,966  
Economic Opportunity

**McDowell County Health Coalition**  
Housing Needs for Macon and Jackson County  
\$6,530.77  
Education, Health & Wellness

**McDowell Technical Community College**  
Construction Trade Skills Academy  
\$175,784.77  
Economic Opportunity

**Meridian Behavioral Health Services**  
Circle of Security Program  
\$186,050  
Health & Wellness

**Mitchell County SafePlace**  
Domestic Violence Sexual Assault Services  
\$45,000  
Health & Wellness

**Mitchell-Yancey Habitat for Humanity**  
Building Community through Affordable Safe and Healthy Homes  
\$170,000  
Housing



**Monarch**  
Developing Professional Foster  
Parenting Homes  
\$700,000  
Housing

**Mountain Area Health  
Education Center**  
WNC Vaccine Acceleration  
Corps  
\$100,000  
Health & Wellness

**FORE-Expansion of MAT  
Capacity Grant**  
\$120,000  
Substance Use Disorder

**Medication-Assisted Treatment**  
\$144,800  
Substance Use Disorder

**Buncombe Bridge to Care**  
\$499,361  
Substance Use Disorder

**Mountain BizWorks**  
Accelerating Outdoors: Outdoor  
Recreation Powering Economic  
Growth  
\$900,000  
Economic Opportunity

**Developing Rural CDC Capacity  
across WNC**  
\$250,000  
Economic Opportunity

**Mountain Community Health  
Partnership**  
Burnsville Community Health  
Center  
\$495,779  
Health & Wellness

**Mountain Community health  
Worker Program\***  
\$75,000  
Health & Wellness

**Mountain Housing  
Opportunities**  
Single Family Home Rehab  
Program  
\$50,000  
Housing

**Balsam Edge**  
\$855,000  
Housing

**Special Needs Housing  
Acquisition and Preservation**  
\$600,000  
Housing

**Mountain Projects**  
Outreach and Marketing  
Support for ACA Special  
Enrollment Period  
\$10,000  
Health & Wellness

**Smoky Mountain Housing  
Partnership, Affordable Housing  
Development Initiative**  
\$872,671  
Housing

**Rehabilitation Operating  
Support**  
\$100,000  
Housing

**WNC Pandemic Recovery  
Program\***  
\$239,206  
Health & Wellness

**myFutureNC, Inc.**  
Developing a Network of  
Local Educational Attainment  
Collaboratives  
\$344,798  
Economic Opportunity,  
Education

**NACCP Empowerment  
Programs, Inc.**  
Community Support, Education  
and Empowerment in 7 WNC  
Counties  
\$20,000  
Racial Equity

**Nantahala Health Foundation**  
Regional Healthy Homes  
Initiative  
\$200,000  
Housing

**Neighbors Feeding Neighbors  
Food Ministry**  
Neighbors Feeding Neighbors  
Food Ministry  
\$12,000  
Health & Wellness

**North Carolina Community  
Foundation**  
Deepening Critical News and  
Information Service for Thriving  
WNC\*  
\$218,000  
Racial Equity

**North Carolina Dental Society  
Foundation**  
Boosting Dental Auxiliaries to  
Better Serve WNC  
\$115,550  
Health & Wellness

**North Carolina Department of  
Information Technology**  
Healthy and Connected  
Workforce  
\$97,200  
Health & Wellness

**North Carolina School of  
Science and Mathematics**  
NCSSM Morganton Capital and  
Program Expansion in WNC  
\$1,000,000  
Education

**North Carolina State University**  
Making WNC the National  
Leader in Digital Inclusion\*  
\$1,303,853  
Economic Opportunity

**Building STEM Awareness in  
WNC\***  
\$100,000  
Education

**Chancellor's Leadership  
Development Program for  
Students from WNC**  
\$31,734.66  
Education

**Northwestern Housing  
Enterprises**  
Historic Valdese Weavers Mill  
\$2,000,000  
Housing

**9% Tax Credit Application in  
Avery County**  
\$75,000  
Housing

**Nurse-Family Partnership**  
Improved Health and Wellness  
for Moms and Babies in WNC  
\$75,000  
Health & Wellness, Racial Equity

**Olive Hill Community Economic  
Development Corporation**  
Leverage Fund/Capacity  
Support  
\$57,600  
Leverage Fund/Capacity Support

**OnTrack Financial Education &  
Counseling**  
WNC Pandemic Recovery  
Program: VITS and Financial  
Capabilities\*  
\$100,000  
Health & Wellness

**One Youth at a Time**  
Supporting the Humanity of  
Black and Brown People  
\$25,000  
Education, Racial Equity

**Open Doors of Asheville**  
To & Through College Access  
and Completion Initiative and  
AVL Rise Programs  
\$200,000  
Education

**Organic Growers School**  
WNC Food Justice  
Planning Initiative - Phase 2  
Implementation  
\$150,000  
Health & Wellness

**Out of the Ashes**  
Housing to Combat  
Homelessness and Addiction in  
Rutherford County  
\$1,181,000  
Housing

**Peak Academy Charter School**  
Addressing Social Determinants  
of Health for Asheville PEAK  
Academy Students  
\$329,726  
Racial Equity

**Pisgah Health Foundation**  
Food Resource Matching Grant  
\$145,994  
Health & Wellness

**Regional Home Repair**  
\$200,000  
Housing

**Pisgah Legal Services**  
Support for Special Affordable  
Care Act Open Enrollment  
\$50,000  
Health & Wellness

**WNC Pandemic Recovery  
Program**  
\$2,825,250  
Health & Wellness

**Read to Succeed Asheville**  
Capacity Building Funding  
for Community Literacy  
Programming  
\$90,000  
Education

**Reconnecting Reentry, Inc.**  
Reconnecting Reentry  
Expansion  
\$15,000  
Substance Use Disorder

**Riverlink**  
Southside Community Project  
\$115,000  
Racial Equity

**Rosa Walker Advancement  
Initiative**  
Leadership, Educational, and  
Health Education  
\$10,000  
Leverage Fund/Capacity Support

**Rural Economic Development  
Center**  
WNC Education Campaign on  
the Health Insurance Coverage  
Gap  
\$180,000  
Health & Wellness

**Rutherford County**  
Opioid Planning  
\$271,000  
Substance Use Disorder



**Renovation of Historic 1925 RS Middle School Building**  
\$49,000  
*Housing*

**Rutherford County Habitat For Humanity**  
**Almost Home**  
\$170,000  
*Housing*

**Spindale Revitalization Project**  
\$224,800  
*Housing*

**Rutherford Housing Partnership**  
**Home Repair and ESFR/URP Grant Coordinator**  
\$50,000  
*Housing*

**Revitalizing Spindale**  
\$550,050  
*Housing*

**Safelight**  
**Counseling Center Expansion**  
\$105,000  
*Health & Wellness*

**SeekHealing**  
**Listening Line\***  
\$169,240  
*Substance Use Disorder*

**Sequoyah Fund, Inc.**  
**The Medical Careers and Technology Pipeline for Indigenous Youth**  
\$350,000  
*Racial Equity*

**Smart Start Partnership For Children**  
**Smart Start Western Resiliency**  
\$661,500  
*Education*

**Soar Inc**  
**F.A.I.R. Program**  
\$50,000  
*Education, Racial Equity*

**Southern Conservation Partners Inc.**  
**RootEd: Connecting Students and Schools**  
\$120,000  
*Economic Opportunity*

**Southmountain Children and Family Services**  
**Sprinkler System for Foster Community**  
\$56,000  
*Health & Wellness*

**Southwestern Commission**  
**WNC Food Works**  
\$500,000  
*Economic Opportunity*

**Sparc Foundation**  
**Capacity Building\***  
\$35,350  
*Racial Equity*

**Spruce Pine Housing Authority**  
**Kid's Bike Shop**  
\$113,214  
*Education*

**St. James AME Church**  
**St. James AME Renovation**  
\$244,983.26  
*Leverage Fund/Capacity Support*

**St. Gerard House**  
**Infrastructure Capacity Grant for Scalable Growth**  
\$226,188  
*Education*

**Stanley Community College Foundation**  
**Trauma-informed Curriculum in Early Childhood Education**  
\$29,600  
*Education*

**Steady Collective**  
**Naloxone Vending Machines Pilot in Buncombe County**  
\$103,546  
*Substance Use Disorder*

**STEM West Inc.**  
**Building Literacy**  
\$75,000  
*Education*

**Steps To Hope, Inc.**  
**Empowering Through Counseling**  
\$54,600  
*Health & Wellness*

**Program Facilitator\***  
\$60,000  
*Leverage Fund/Capacity Support*

**Sunrise Community For Recovery & Wellness**  
**Health Equity at the Crossroads of Housing and Mental Health**  
\$90,000  
*Substance Use Disorder*

**In the Solution - Infrastructure Plan**  
\$241,822  
*Substance Use Disorder*

**The Conservation Fund**  
**Advancing Access and Health Equity through Capacity Building**  
\$359,200  
*Economic Opportunity, Health & Wellness, Leverage Fund/ Capacity Support*

**The Givens Estates, Inc.**  
**Capacity Building to Increase Affordable, Supportive Senior Housing**  
\$285,000  
*Housing*

**Pre-development for a 9% Low-Income Housing Tax Credit Application**  
\$75,000  
*Housing*

**The GroundTruth Project**  
**Report for America**  
\$5,000  
*Health & Wellness*

**The Hub of McDowell, Inc.**  
**Home Ownership**  
\$81,340  
*Housing*

**The Industrial Commons**  
**Supporting Frontline Workers Through Employee Ownership**  
\$500,000  
*Economic Opportunity*

**The Lord's Harvest For The Hungry, Inc.**  
**Homebound Food Insecurity**  
\$56,000  
*Health & Wellness*

**The Mediation Center**  
**Family Visitation\***  
\$90,000  
*Health & Wellness*

**The Saluda Pop-Up Pantry**  
**Farm to Neighbor**  
\$22,500  
*Health & Wellness*

**The Salvation Army of Hendersonville**  
**School of Performing Arts**  
\$60,000  
*Education*

**The University of North Carolina At Asheville Foundation, Inc.**  
**Expanding Voucher Acceptance in the Landlord Partnership**  
\$35,000  
*Housing*

**Curriculum Creation for Learning Pods**  
\$4,700  
*Racial Equity*

**Thermal Belt Outreach Ministry**  
**Hope Valley Lane Supportive Development - Phase II**  
\$490,551  
*Housing*

**Thrive**  
**Building Capacity in Case Management**  
\$58,033.93  
*Housing*

**Town of Rutherfordton**  
**Town of Rutherfordton Redevelopment Commission Capacity Building**  
\$175,000  
*Housing*

**Town of Spindale**  
**Spindale Revitalization Plan**  
\$175,000  
*Housing*

**Tractor Food and Farms**  
**TRACTOR Food and Farms**  
\$160,000  
*Health & Wellness*

**Transylvania County**  
**Transylvania County**

**Infrastructure Expansion**  
\$2,037,500  
*Housing*

**Transylvania Habitat for Humanity**  
**Habitat Home Sponsorship in Transylvania County**  
\$170,000  
*Housing*

**United Christian Ministries of Jackson County**  
**Expansion of Food Pantry\***  
\$50,000  
*Health & Wellness*

**United Way of Asheville & Buncombe County**  
**Community Schools\***  
\$975,000  
*Education*

**United Way of Cherokee & Clay Counties**  
**Community Impact Support\***  
\$19,000  
*Flexible Opportunities*

**United Way of Haywood County**  
**United Way of Haywood County Community and Impact Operating\***  
\$73,331  
*Flexible Opportunities*

**United Way of Rutherford County**  
**Voices of Affrilachia**  
\$5,473  
*Substance Use Disorder*

**United Way of Rutherford County Operating Support\***  
\$70,234  
*Flexible Opportunities*

**University of North Carolina Asheville**  
**Western NC Collaboration for Engagement in Health Promotion**  
\$486,524  
*Health & Wellness*

**Just Accounting for Health in WNC**  
\$856,160  
*Racial Equity*

**University of North Carolina at Chapel Hill**

**ncIMPACT Initiative**

\$450,161  
*Economic Opportunity,  
Education*

**Patient-centered Needs Assessment\***

\$202,231  
*Health & Wellness*

**Vaya Health**

**SAMHSA System of Care Expansion and Sustainability Grant Matching**

\$50,000  
*Leverage Fund/Capacity Support*

**Vecinos**

**COVID-19 Tests**

\$10,159.38  
*Health & Wellness*

**WNC Community Health Worker**

\$150,000  
*Health & Wellness*

**Verner**

**Increasing Access to High Quality and Inclusive Early Care and Education**

\$200,000  
*Education*

**Building Verner's Capacity for Expanded, High-Quality Programming**

\$338,224  
*Education*

**WAMY Community Action**

**AMY Community Housing Coalition**

\$150,000  
*Housing*

**Warrior Moms**

**Warrior Mom Ink\***

\$8,500  
*Racial Equity*

**West Marion Community Forum**

**Equity and Access to Health for Black and Brown Communities\***

\$137,115  
*Racial Equity*

**Western Carolina Community Action**

**Columbus Children's Center**

\$182,145  
*Education*

**Preserving Affordable Housing in Transylvania County**

\$56,880  
*Housing*

**Transylvania and Henderson County Fair Market Rent Appeal**

\$28,593  
*Housing*

**Tebeau Children's Center Renovation Project**

\$341,815  
*Education*

**Western Carolina Medical Society Foundation**

**Mobile Vaccine Clinics**  
\$80,000  
*Health & Wellness*

**Project Access Hub and Spoke Network**

\$235,050  
*Health & Wellness*

**Western Carolina Pacesetters Operating Support\***

\$241,000  
*Substance Use Disorder*

**Western Carolina Rescue Ministries**

**Chosen Summer Youth Camp & Youth Impact Workers**

\$90,000  
*Education, Racial Equity*

**Western Carolina University**

**Perceptions of Medication Assisted Treatment (MAT) in Rural Jails**

\$159,358  
*Substance Use Disorder*

**Western North Carolina Housing Partnership**

**Affordable Housing Swain and Clay Counties**

\$92,400  
*Housing*

**Western North Carolina AIDS Project**

**Social Determinants of Health Programs**

\$250,000  
*Substance Use Disorder*

**Western North Carolina Community Health Services**

**Health Care Expansion: Candler Health Center at Hominy Valley**  
\$470,000  
*Health & Wellness*

**Western North Carolina Region Education Service Alliance**

**Enhancing Social/Emotional Learning and Well Being For All**  
\$290,700  
*Education*

**Western Piedmont Community College**

**Success Coaches**  
\$118,330  
*Economic Opportunity*

**WNC Bridge Foundation**

**Safe Housing**  
\$200,000  
*Housing*

**WNC Communities**

**Disaster Relief for Agriculture Programs\***

\$500,000  
*Flexible Opportunities*

**Regional FFA Working Farm**

\$220,000  
*Education*

**WNC Health Network**

**Collaborative Regional COVID-19 Communications Campaign**

\$693,694  
*Health & Wellness*

**WNC Superheros**

**Building Capacity to Meet the Growing Need**

\$21,000  
*Health & Wellness*

**Yancey County**

**Yancey County Opioid Settlement Planning Initiative\***

\$300,000  
*Substance Use Disorder*

**Yancey County Affordable Housing**

\$2,500,000  
*Housing*

**YMCA of Avery County**

**Mitchell County YMCA**  
\$100,000  
*Health & Wellness*

**YTL Training Programs**

**YTL Training Programs Operational Support**  
\$85,000  
*Education, Racial Equity*

**YWCA of Asheville and Buncombe County**

**YWCA Empowerment Child Care Expansion**  
\$415,000  
*Education*

## STATEMENT OF

# Financial Position

### Assets:

2020

2019

Cash and cash equivalents.....	\$34,852,79	\$6,722,180
Sales tax receivables.....	266,802	69,652
Investments, at fair value (Note N).....	1,652,927,563	1,092,619,441
Program-related investments, net.....	1,400,000	-
Fixed assets, net.....	8,760,102	181,356
Other assets.....	1,852,130	277,643

### Total Assets:

\$1,700,059,388

\$1,099,870,272

### Liabilities & Net Assets:

2020

2019

#### Liabilities

Grants payable.....	-	\$365,000
Accounts payable.....	1,030,855	1,107,682
Notes payable.....	14,750,539	-
Other liabilities.....	-	179,414

### Total Liabilities:

\$1,700,059,388

\$1,099,870,272

### Net Assets without donor restrictions:

\$1,684,277,994

\$1,098,218,176

### Total Liabilities & Net Assets:

\$1,700,059,388

\$1,099,870,272

# STATEMENT OF

# Activities

## Revenues:

**2020**

**2019**

Contributions received.....	\$379,827,326	\$1,053,052,882
Investment returns, net .....	247,837,655	50,851,894

### Total Revenues:

**\$627,664,981**

**\$1,103,904,776**

## Expenses:

**2020**

**2019**

Compensation and benefits.....	5,821,466	2,377,394
Professional fees.....	3,124,125	2,084,772
Other expenses.....	3,049,181	859,434

### Total Expenses:

**\$11,994,772**

**\$5,321,600**

## Grants Approved:

**2020**

**2019**

Grants approved.....	29,610,391	365,000
----------------------	------------	---------

### Total Grants Approved:

**\$26,610,391**

**\$365,000**

### Change in Net Assets:

**\$586,059,818**

**\$1,098,218,176**

### Net Assets at beginning of year:

**\$1,098,218,176**

-

### Net Assets at end of year:

**\$1,684,277,994**

**\$1,098,218,176**

## CONSOLIDATED STATEMENTS OF

# Cash Flows

Cash flows from operating activities:	2020	2019
Change in net assets .....	\$586,059,818	\$1,098,218,176
<i>Adjustments to reconcile change in net assets to net cash provided by operating activities:</i>		
Contribution revenue - investments.....	(258,118,350)	(938,277,461)
Contribution revenue - furniture, fixtures and equipment.....	-	(207,750)
Depreciation expense .....	60,310	30,198
Amortization and writeoff of ROU asset .....	177,866	143,113
Unrealized appreciation on assets.....	(250,529,277)	(51,577,444)
Allowance for bad debt.....	700,000	-
<i>Changes in operating assets and liabilities:</i>		
Sales tax receivables .....	(197,150)	(69,652)
Other assets.....	(1,752,353)	(420,756)
Grants payable .....	(365,000)	365,000
Accounts payable .....	(76,827)	1,107,682
Other liabilities .....	(179,414)	179,414
<b>Net cash provided by operating activities:</b>	<b>\$75,779,623</b>	<b>\$109,490,520</b>





## CONSOLIDATED STATEMENTS OF CASH FLOWS (2)

Cash flows from investing activities:	2020	2019
Purchases of furniture, fixtures, and equipment.....	(11,895)	(3,804)
Purchases of Land and buildings.....	(8,627,161)	-
Sales of program-related investments.....	10,100,000	-
Purchases of program-related investments.....	(12,200,000)	-
Sales of investments.....	410,370,884	193,494,920
Purchases of investments.....	(462,031,379)	(296,259,456)
Net cash used in investing activities:	<b>\$(62,399,551)</b>	<b>\$(102,768,340)</b>

Cash flows from financing activities:	2020	2019
Proceeds from notes payable.....	15,000,000	-
Payments on notes payable.....	(249,461)	-
Net cash provided by financing activities:	<b>\$14,750,539</b>	<b>-</b>
Net increase in cash:	<b>\$28,130,611</b>	<b>\$ 6,722,180</b>
Cash, beginning of year:	<b>\$6,722,180</b>	<b>-</b>
Cash, end of year:	<b>\$34,852,791</b>	<b>\$6,722,180</b>

# DOGWOOD HEALTH TRUST

## Board of Directors

**Janice W. Brumit**, Board Chair, Governance and Compensation Committee Chair (Buncombe County)

**John F.A.V. “Jack” Cecil**, Vice Chair, Nominating Committee Chair (Buncombe County)

**George D. Renfro**, CPA, Secretary/ Treasurer, Investment Committee and Impact Investing Chair (Buncombe County)

**Vivian A. Bolaños**, Finance Committee Chair (Henderson County)

**Casey Cooper**, MBA (Qualla Boundary)

**Jaqueline L. Godlock** (Rutherford County)

**Dawna D. Goode-Ledbetter** (McDowell County)

**Rear Admiral Richard Houck**, USCG, Ret. (Transylvania County)

**Fred Jones**, JD (Macon County)

**Samuel D. Lupas**, Audit Committee Chair (Jackson County)

**Rt. Rev. José McLoughlin** (Henderson County)

**Jacquelyn S. Simms**, Program and Grants Committee Chair (Buncombe County)

**Sarah Thompson** (Jackson County) – Resigned in 2021 to join Dogwood staff

**Donna Tipton-Rogers**, Ed.D., (Clay County)

**Martha C. Tyner**, Covenant Compliance Committee Chair (Yancey County)

## Non-Board Committee Service

In addition to our board of directors, several members of the WNC community voluntarily lend their expertise to inform our work. We are grateful for the time and attention provided by each of the following individuals.

### PROGRAMS AND GRANTS

**Suzanne Landis**, M.D., Buncombe County

**Brian Mitchell**, M.D., Clay County

**Dwight Mullen**, Ph.D., Buncombe County

**April Ross**, RN, Swain County

### NOMINATING

**David Joyce**, Ph.D., Transylvania County

**Harris Prevost**, Ed.D., Avery County

### COVENANT COMPLIANCE

**Dr. John Ball**, J.D., M.D., Buncombe County

**Annette Staley**, Polk County

### INVESTMENT COMMITTEE

Buncombe County

**Robert Chandler**, CPA

**Scott Hickman**

**Lyle Johnson**

**Thomas Maher**

**Jim Mathews**

**Nathan Renfro**

**Kent Stahl**

**Henry Wilkinson**

BE  
Inspired



**DOGWOOD**  
HEALTH TRUST

866 Hendersonville Road, Asheville, NC 28803

[dogwoodhealthtrust.org](http://dogwoodhealthtrust.org)

**STAY IN TOUCH:**



/DogwoodWNC



@DogwoodWNC

Sign up for our newsletter at [dogwoodhealthtrust.org/subscribe](http://dogwoodhealthtrust.org/subscribe)